

TMI Passive Suite v1.0.0

by Time Management Inc.

Requirements:

- 1 computer with Windows XP Service Pack 2
- Internet Connectivity
- An account on the VentureGPS website

Installation

- Insert disc
- Click Install Components

Installation will consist of 6 steps.

- Click Begin Install

Step 1 - Install Dot.NET Framework v1.1

You must complete this step even if you already have a newer version and especially if you have an older version. Our software is not compatible with versions other than the one on this disc.

- Click Install
This will launch the first installation program. Follow its directions. Do NOT change any default settings.
- After the install completes, click Go To Next Step

Step 2 - Install Microsoft SQL Desktop Engine

You must complete this step even if you already have MSDE or SQL Server Installed. Setup will create a private instance called VentureFleet.

- Click Install MSDE
This will launch the MSDE installation program. Follow its directions. Do NOT change any default settings.
THERE WILL BE NO CONFIRMATION SCREEN WHEN INSTALL FINISHES
so pay attention so that you do not move on to the next step prematurely.
- After the install completes, click Go To Next Step

Step 3 - Install Database

This will install the database in the MSDE Instance we just created.

- Click Install

This will launch the installation program. Follow its directions. Do NOT change any default settings. A dos prompt window will eventually pop-up and a bunch of numbers will run across. DO NOT CLOSE THIS WINDOW.

- A pop-up will ask you if you want to add information to the registry. Click YES.
- After the install completes, click Go To Next Step

Step 4 - Install Downloader

This is the program that downloads vehicle data to your computer.

- Click Install
This will launch the installation program. Follow its directions. Do NOT change any default settings.
- After the install completes, click Go To Next Step

Step 5 - Install Uploader

This is the program that uploads vehicle data from your computer to the webserver.

- Click Install
This will launch the installation program. Follow its directions. Do NOT change any default settings.
- After the install completes, click Go To Next Step

Step 6 - Install Hardware

Plug in your Base Station. Windows should auto-detect it and install the driver off of the CD.

- Click Go To Next Step


Install is finished

- Restart your computer

Using the System

The system consists of 2 programs that run independently of each other.

The Uploader

The Uploader program, which pushes your data to the web server, will always be running in the background, from the minute you restart your computer. The uploader should have an icon in your taskbar near the clock that looks like . If you do not see this icon then you can launch the program by going to Start > All Programs > Time Management Inc > TMI Passive Uploader


Configuration

The first time you restart your computer after installation you will see an alert box that says you need to enter your login info. Click Yes. A form will pop up. On this form you must enter your username and password for the VentureGPS website. The program will then verify your login with the web server and configure your computer for your online account. The window will just disappear if your login was verified.

Upload Interval

The Uploader is set by default to upload your data to the web every 15 minutes. You can change this interval by right-clicking the icon in the taskbar and selecting *Set Sync Interval*. This will open a form with predefined intervals ranging from 15 minutes to 12 hours.

Sync

When the interval is up, a sync action will begin. This is visible by the taskbar icon changing to . When the sync is finished, the icon will return to normal and the interval timer will restart. You can hover your mouse over the normal icon to see at what time the last sync was. Note: the last sync time will update even if no data was updated.

The Downloader

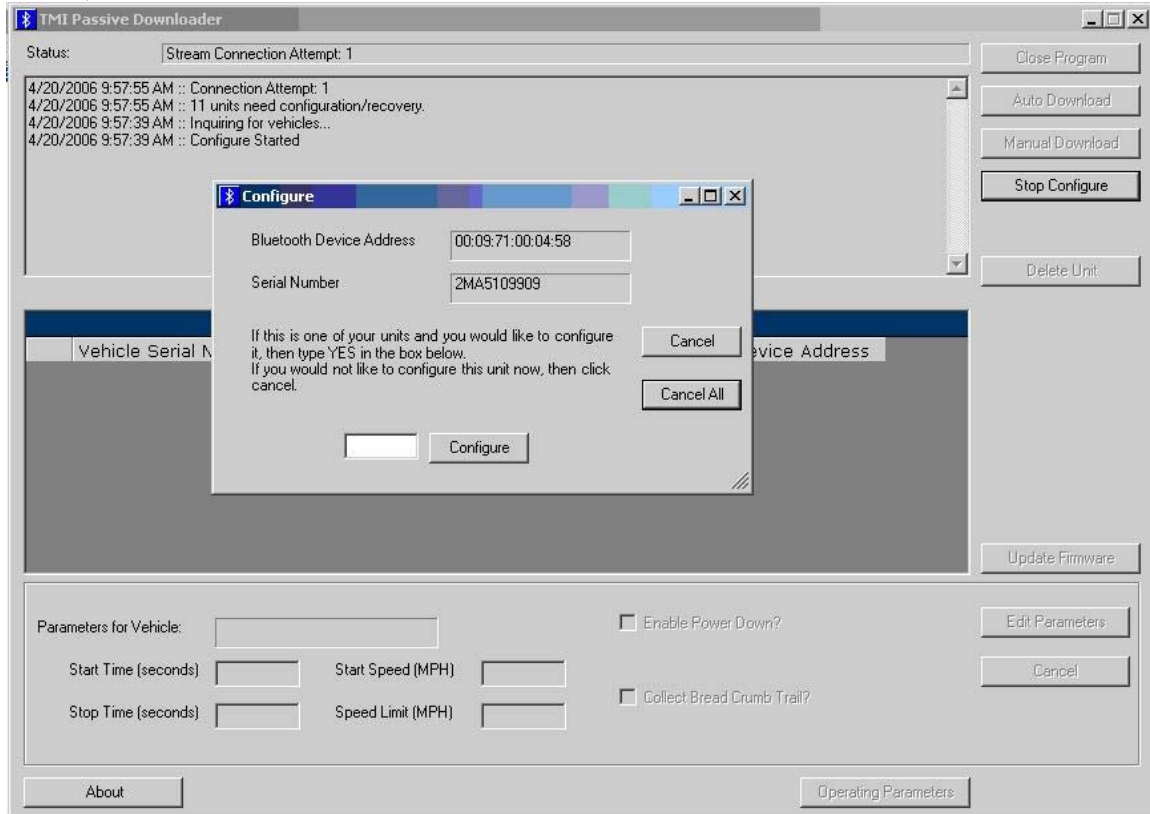
The Downloader can be started from the shortcut on the desktop or in the start menu. You must open this program manually.

Initial Setup

The first time you open the program you will be asked to enter a pincode. This can be any combination of letters and numbers between 4 and 16 characters. REMEMBER THIS CODE. If you ever need to reinstall the application, you will need this code or you will not be able to talk to your units. This code is viewable from within the application by clicking the About button

Configuration / Recovery

On your first run of the program, all you can do is configure or recover units. When you click the Configure / Recover button, the base station attempts to find nearby units. The log screen will say how many units have been discovered. A window will pop-up, one at a time, for each unit.



In the window you will see the bluetooth address and the serial number for the device. Use this information to determine if this is one of the units that your units. If it is not your unit, then it may be the unit of a nearby company that is in range or of some other type of bluetooth device in the building. In this case, click cancel. However, if this is your unit, then type YES and click configure. The program will attempt to bond with the unit. When the window closes, the next one will pop up, if there are more units to configure. If at any time you want to abort the whole configure process, click the Cancel All button. Afterwards, successfully bonded units will appear in the list under the log area.

Manual Download

Click a vehicle from the list and then click Manual Download to start a 1-time download for this 1 unit.

Auto Download

When you click Auto Download, the program will cycle through the vehicles in the list and attempt to perform a manual download on each unit, one at a time. After the last vehicle in the list has been checked, the program will start a timer and wait for the next interval to cycle through again. You will see in the log and the status bar, an estimate of

when the next cycle will begin. You can set the interval minutes by clicking the Operating Parameters button. This button is enabled when you are not in Download Mode.

Note: The data from a download is not uploaded to the web server immediately after the download completes. That is a separate process. Your data will upload on the next sync interval of the Uploader program. If you don't want to wait for the next sync interval, you can right-click the Uploader program icon in the taskbar and select Sync. This will start a sync action now.