

TMI Passive Suite Installation & User Guide

07/03/2007 v1.2.0

Requirements:

- 1 computer with Windows XP Service Pack 2
- Hi-Speed Internet Connectivity
- An account on the VentureGPS website <http://venturegps.com>

Installation

- Insert disc
- Click Install Components

Installation will consist of 6 steps. Click Begin Install

Step 1 - Install Dot.NET Framework v1.1

You must complete this step even if you already have a newer version and especially if you have an older version. Our software is not compatible with versions other than the one on this disc.

- Click Install
This will launch the first installation program. Follow its directions. Do NOT change any default settings.
- After the install completes, click Go To Next Step

Step 2 - Install Microsoft SQL Desktop Engine

You must complete this step even if you already have MSDE or SQL Server Installed. Setup will create a private instance called VentureFleet.

- Click Install MSDE
This will launch the MSDE installation program. Follow its directions. Do NOT change any default settings.
THERE WILL BE NO CONFIRMATION SCREEN WHEN INSTALL FINISHES so pay attention so that you do not move on to the next step prematurely.
- After the install completes, click Go To Next Step

Step 3 - Install Database

This will install the database in the MSDE Instance we just created.

- Click Install
This will launch the installation program. Follow its directions. Do NOT change any default settings. A dos prompt window will eventually pop-up and a bunch of numbers will run across. DO NOT CLOSE THIS WINDOW.
- A pop-up will ask you if you want to add information to the registry. Click YES.
- After the install completes, click Go To Next Step

Step 4 - Install Downloader

This is the program that downloads vehicle data to your computer.

- Click Install
This will launch the installation program. Follow its directions. Do NOT change any default settings.
- After the install completes, click Go To Next Step

Step 5 - Install Uploader

This is the program that uploads vehicle data from your computer to the webserver.

- Click Install
This will launch the installation program. Follow its directions. Do NOT change any default settings.
- After the install completes, click Go To Next Step

Step 6 - Install Hardware

This step is different based on if you are installing from CD or you downloaded the software from the WEB.

CD Install

Plug in your Base Station. Windows should auto-detect it and install the driver off of the CD.

- Click Go To Next Step
Install is finished
- Restart your computer

WEB Install

With a WEB install, Windows will not be able to find the device driver automatically and we will need to manually specify the location.

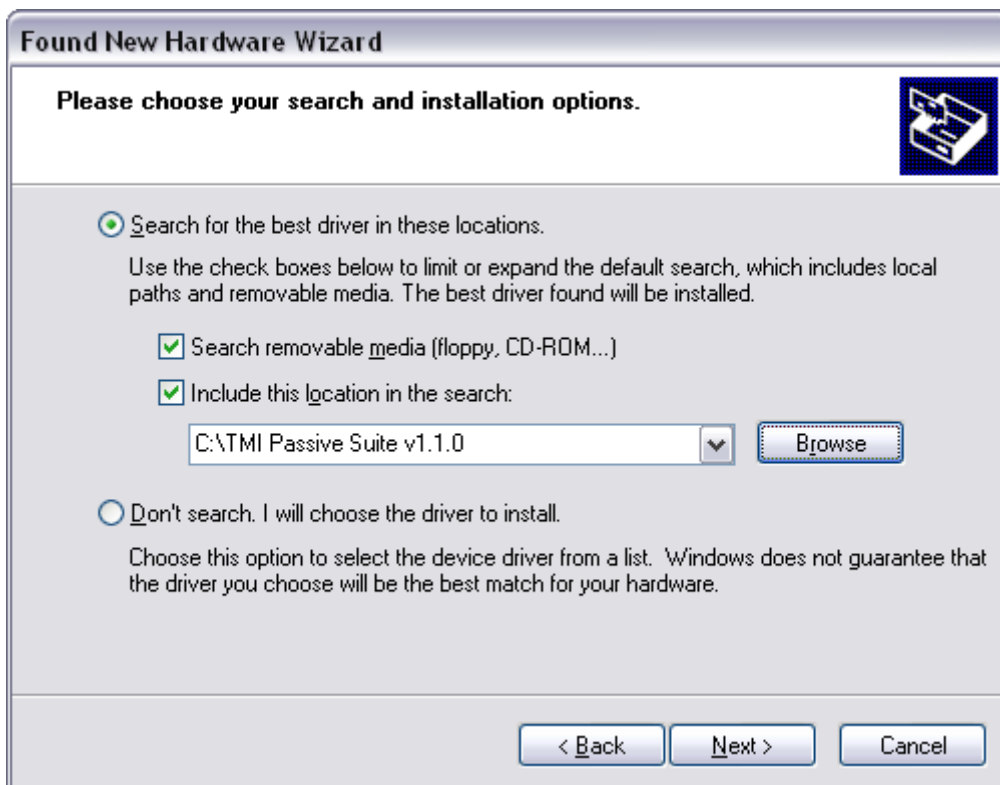
You can exit the installer program now.

Plug in your Base Station. Windows should detect the hardware and start the New Hardware Wizard.

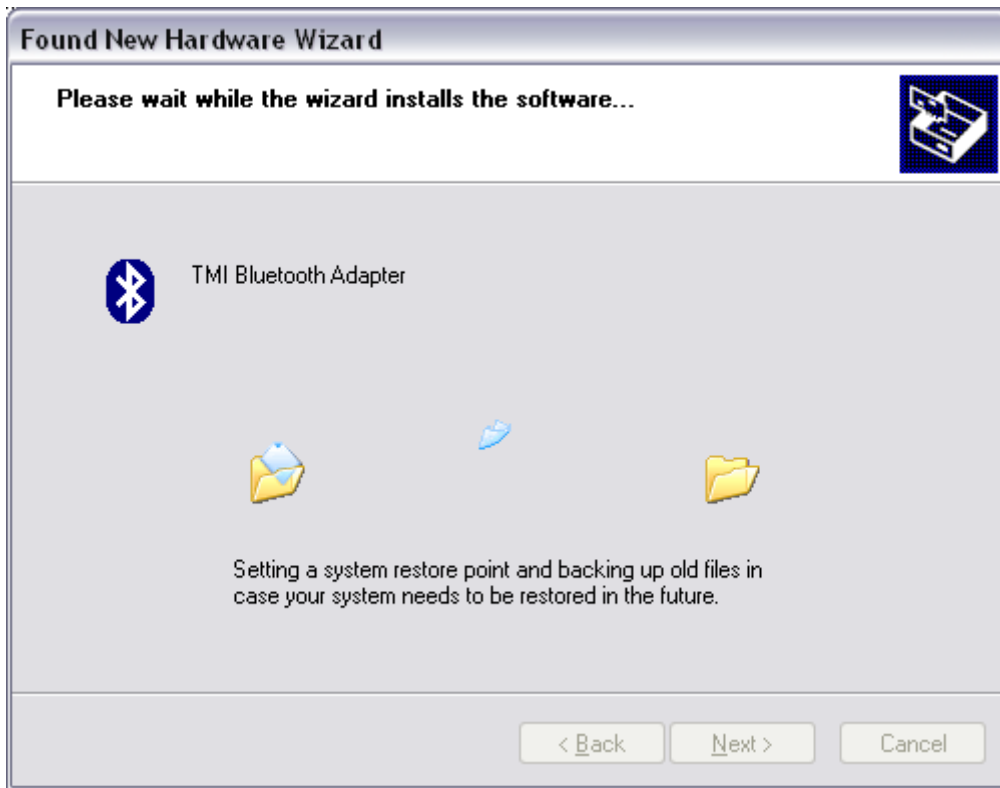
1. Select to install from a Specific Location



2. Select the options and browse the location: C:\TMI Passive Suite v1.2.0



3. The wizard should find the driver and begin installation. Click finish when it is done.




4. After it is done, a balloon will pop up near your clock, stating that more hardware has been found. That will install automatically.

Install is finished
Restart your computer

Using the System

The system consists of 2 programs that run independently of each other.

The Uploader

The Uploader program, which pushes your data to the web server, will always be running in the background, from the minute you restart your computer. The uploader should have an icon in your taskbar near the clock that looks like . If you do not see this icon then you can launch the program by going to Start > All Programs > Time Management Inc > TMI Passive Uploader. It is possible that the Uploader tried to startup before your database was loaded, in which case the Uploader would have closed.


Configuration

The first time you restart your computer after installation you will see an alert box that says you need to enter your login info. Click Yes. A form will pop up. On this form you must enter your username and password for the VentureGPS website. The program will then verify your login with the web server and configure your computer for your online account. The window will just disappear if your login was verified.


Upload Interval

The Uploader is set by default to upload your data to the web every 15 minutes. You can change this interval by right-clicking the icon in the taskbar and selecting *Set Sync Interval*. This will open a form with predefined intervals ranging from 15 minutes to 12 hours.

Sync

When the interval is up, a sync action will begin. This is visible by the taskbar icon changing to . When the sync is finished, the icon will return to normal and the interval timer will restart. You can hover your mouse over the normal icon to see at what time the last sync was. Note: the last sync time will update even if no data was updated.

The Downloader

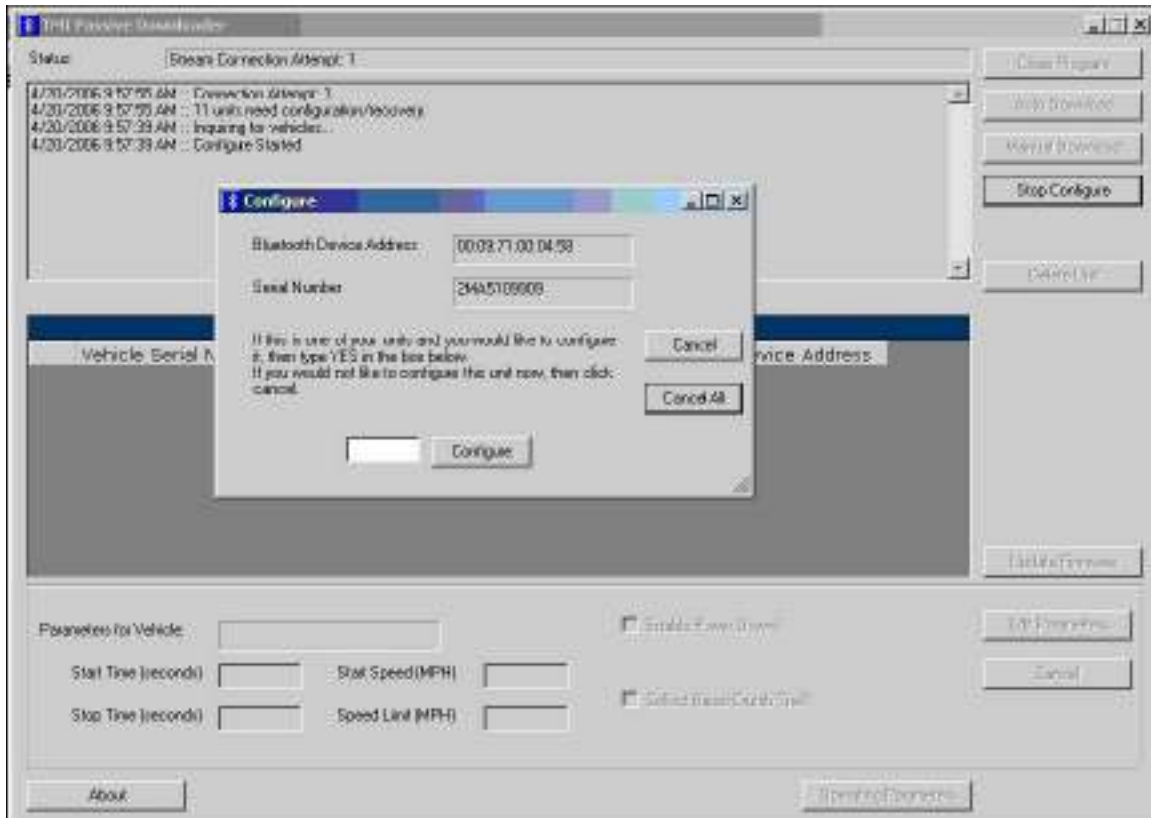
The Downloader program, which downloads data from your vehicles, will always be running in the background, from the minute you restart your computer. The Downloader should have an icon in your taskbar near the clock that looks like . If you do not see this icon then you can launch the program by going to Start > All Programs > Time Management Inc > TMI Passive Downloader. It is possible that the Downloader tried to startup before your database was loaded, in which case the Downloader would have closed.

Initial Setup

The first time you open the Downloader you will be asked to enter a pincode. This can be any combination of letters and numbers between 4 and 16 characters. REMEMBER THIS CODE. If you ever need to reinstall the application, you will need this code or you will not be able to talk to your units. This code is viewable from within the application by clicking the About button.

Configuration / Recovery

On your first run of the program, all you can do is configure or recover units. When you click the Configure / Recover button, the base station attempts to find nearby units. The log screen will say how many units have been discovered. A window will pop-up, one at a time, for each unit.



In the window you will see the bluetooth address and the serial number for the device. Use this information to determine if this is one of the units that your units. If it is not your unit, then it may be the unit of a nearby company that is in range or of some other type of bluetooth device in the building. In this case, click cancel. However, if this is your unit, then type YES and click configure. The program will attempt to bond with the unit. When the window closes, the next one will pop up, if there are more units to configure. If at any time you want to abort the whole configure process, click the Cancel All button. Afterwards, successfully bonded units will appear in the list under the log area.

Time Zone Warning

This is an important step. If your trucks are not in EST -5 then you need to perform some extra steps to ensure that your trip data is in the proper time. You must do this after configuring your trucks and BEFORE downloading any data from your trucks.

- After you recover your trucks into the list in the Downloader, right-click on the Uploader icon and hit Sync. This will upload your trucks to your web account.
- Now login to venturegps.com. Go to the Manage section and then to Vehicles

- Here we are going to update each vehicle's time zone, 1 at a time, by clicking the Edit button and then changing the timezone and hitting the update button.
- After updating all vehicles' timezones it is safe to put the Downloader in Auto-Download mode to start getting data.

**If you downloaded data before completing these timezone steps, then all of that data will be in EST. This cannot be changed. Do complete the Time Zone changes now so that all future data will be correct.

Manual Download

Click a vehicle from the list and then click Manual Download to start a 1-time download for this 1 unit.

Auto Download

When you click Auto Download, the program will cycle through the vehicles in the list continuously and attempt to perform a manual download on each unit, one at a time.

Note: The data from a download is not uploaded to the web server immediately after the download completes. That is a separate process. Your data will upload on the next sync interval of the Uploader program. If you don't want to wait for the next sync interval, you can right-click the Uploader program icon in the taskbar and select Sync. This will start a sync action now.